

# BEFORE SEEDING

**FIRST DAY**

**CHOOSE ANY ONE**



+



**ORGANIC MANURE/AGRO BOOSTER + UREA AS PER CLIENT REQUIRE 500GM PER ACRE**



**MIX WELL WITH SOIL BY TRACTOR AND  
SPRAY WITH WATER**

**AFTER 2 DAY**



**NOW START THE SEEDING PROCESS**



# WHEN THE PLANT GROWS UP TO 1 FEET

**1st DAY**

**ADD AGRO POWER  
GROWTH ( 2ML )**



+

**ADD AGRO 82 ( 30ML )**



+

**MIX WITH 15 LITRE  
WATER & SPRAY EVENLY**





# WHEN THE PLANT GROWS UP TO 1 FEET

**5TH DAY**

**AGRO CROP CARE/  
FUNGI CARE (2ML )**

+

**ADD AGRO 82 ( 30ML )**

+

**15 LITRE WATER -  
DEPEND UPON CROPS**





# WHEN THE PLANT GROWS UP TO 1 FEET

10th DAY

ORGANIC MICRONUTRIENTS  
(10ML)



+

ADD AGRO 82 ( 30ML )



+

MIX WITH 15 LITRE  
WATER & SPRAY EVENLY



NOTE : REPEAT THE PROCESS TILL CROP GROWS UP BY 3" FEET LONG



# WHEN THE PLANT GROWS UP TO 3 FEET

**1st DAY**

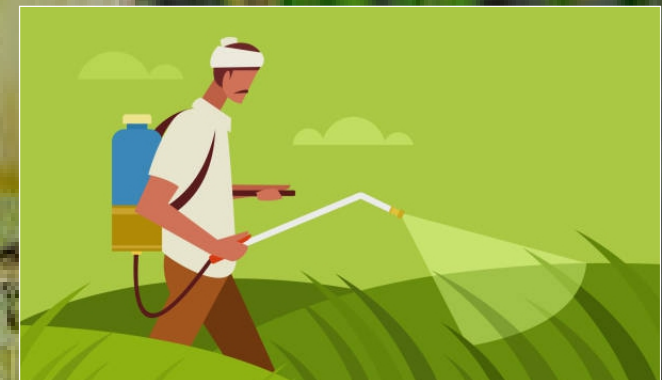
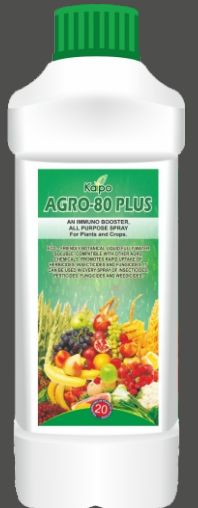
**ORGANIC MICRONUTRIENTS  
( 10ML )**

+

**ADD AGRO 80 ( 50ML )**

+

**MIX WITH 15 LITRE  
WATER & SPRAY EVENLY**





# WHEN THE PLANT GROWS UP TO 3 FEET

5th DAY

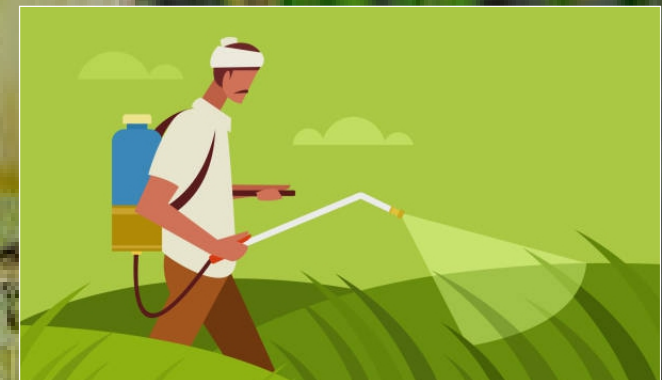
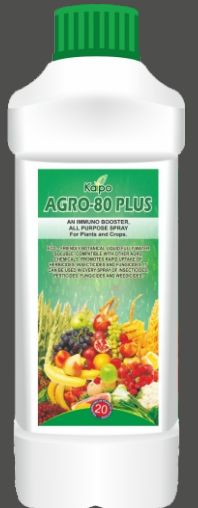
AGRO NEEM OIL  
( 10ML )

+

ADD AGRO 80 ( 50ML )

+

MIX WITH 15 LITRE  
WATER & SPRAY EVENLY





# WHEN THE PLANT GROWS UP TO 3 FEET

**10th DAY**

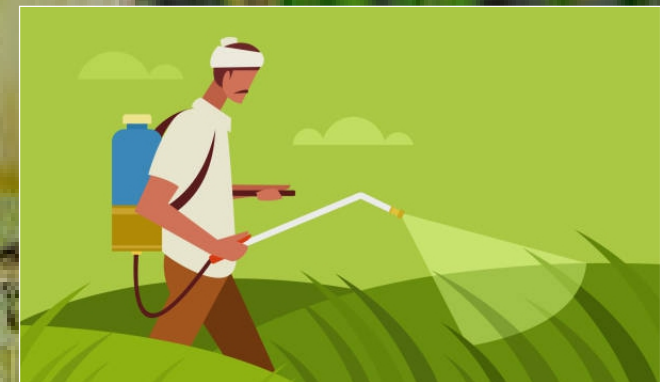
**ORGANIC HUMIC EXTRACT  
( 10ML )**

+

**ADD AGRO 80 ( 50ML )**

+

**MIX WITH 15 LITRE  
WATER & SPRAY EVENLY**



**NOTE : REPEAT THE PROCESS TILL CROP HARVESTING**